

Ramsgate Farm May 2025 AHBA Trial

Judges: Stacey Edwards A.M., Cheryl Padgett P. M.

May 17th - Herding Ranch Dog (HRD I, II, III) – sheep, 5 head

May 18th - Herding Trial Arena Dog (HTAD I, II, III) – sheep, 3 head

Permission has been granted by the American Herding Breeds Association (AHBA) to hold the Trials under the AHBA rules and regulations. Open to all dogs of the herding breeds and multi-purpose breeds with herding background, as listed in the AHBA Breeds List. Dogs must be nine months of age or older on or before date of trial to compete.

STOCK replacement: mix breed Hair sheep \$300 **Ramsgate Farm 1127 Storey Lane, Jefferson GA 30549**

ENTRIES AND FEES: **Pre-Entries open 3/19/2025 and close 4/30/2025**, day of entries accepted. Checks payable to Rachel Vest. **Please use the attached entry form.**

Pre-Entries: \$50/HRD each sheep, \$45/HTAD sheep run

Gate Entries additional \$10/run. Mail to AHBA Trial Secretary Rachel Vest 1494 Hog Mountain Rd. Jefferson, GA 30549 Contact: Rachel Vest 770-634-5582 or investedr@yahoo.com with any questions.

HRD Trial is limited to a maximum of 15 runs for each trial. HTAD Trial is limited to a maximum of 15 runs for each trial. If trial fills, pre-entry compete runs take precedence over FEO runs, regardless of date received. Gate entries (if available) close ½ hour before each class begins. Entry limits may be adjusted based on pre-entries. Run orders will be drawn prior to the trial.

AWARDS: Qualifying Ribbons, 1st – 4th Placement Ribbons, High in Trial

Gates open at 7:30am. Parking areas will be marked. Trial starts at 8:00a.m. with meetings before each class.

ATTENTION EXHIBITORS

- All trials will be conducted under the rules and regulations of AHBA. Rules are available at <http://www.ahbaherding.org>
- For Exhibition Only (FEO) runs are allowed at this trial, and you may run your dog in a class for which it has already qualified. Sanctioned runs take priority.
- A registration/tracking number is required for ALL dogs. If your dog is not registered with another organization (AKC, UKC, ABCA, etc.), you must apply for a registration number with AHBA.
- Bitches in season will run in draw order.
- Entry fees will not be refunded in the event a dog is absent, disqualified, excused, or barred from competition by action of the show committee. Entry fees will only be refunded if the refund request is received before the preentry closing date, no entry fee will be refunded if the show cannot be opened or completed by reasons of riots, civil disturbances, fire, Acts of God, or public emergency. Substitutions allowed with dogs that you own. The host and/or their agents shall assume no responsibility for injury to participant, spectators, or dogs. - Judges may be substituted.
- All dogs must always be leashed or crated except when competing. Please clean up after your dogs.
- For the safety of your dogs and others all dogs must have current vaccinations against rabies, distemper/parvo, you are asked to bring a copy of the rabies certificate with you.
- There will be a \$35.00 service charge for any returned checks.

This is a private farm, please treat it with respect.

OVERNIGHT PARKING IS NOT AVAILABLE AT THE TRIAL SITE

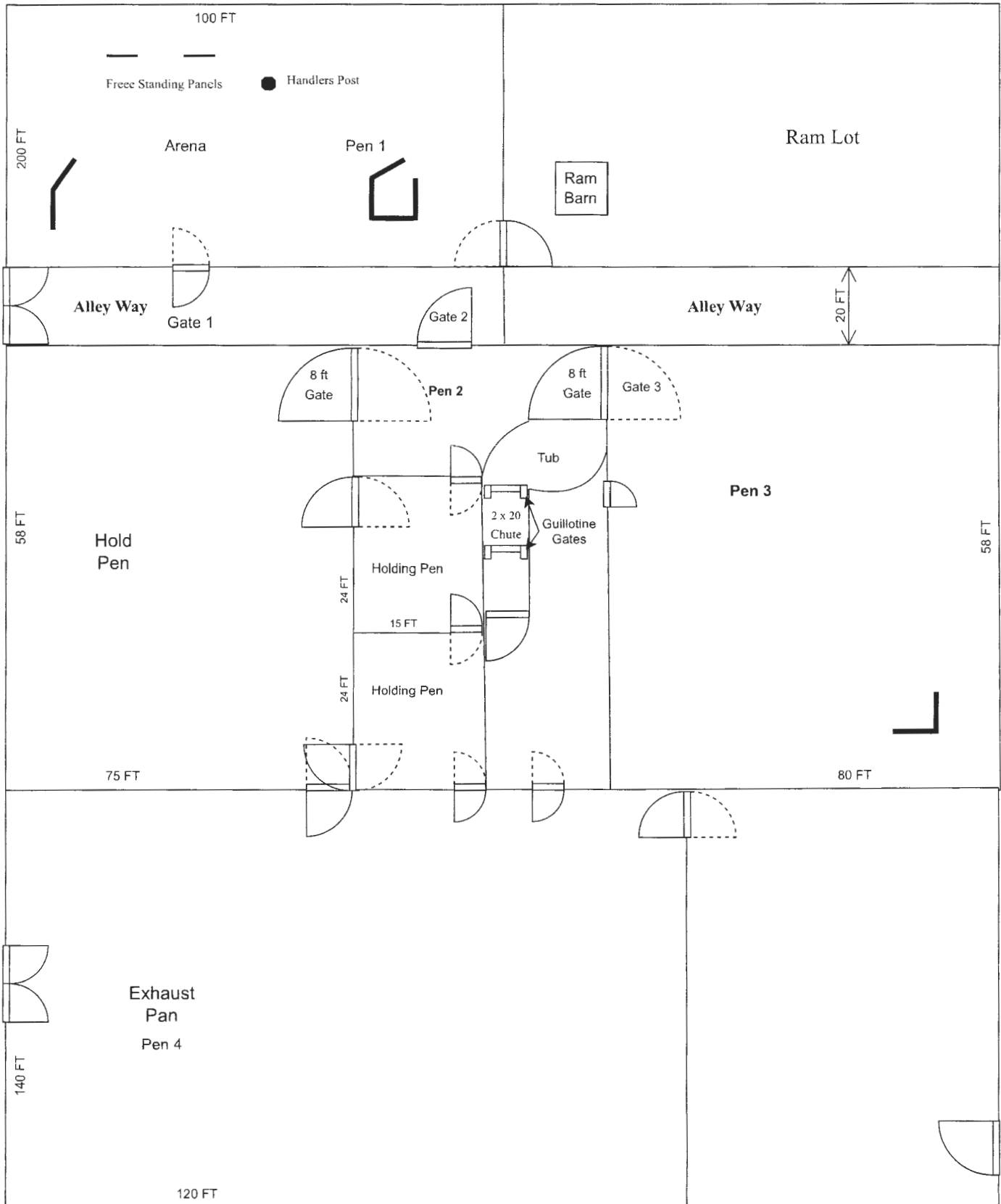
Local Services Vet: Shannon Vet Services Dr. Martha Shannon 1125 Storey Lane, Jefferson GA 30549 706-367-1198

Emergency Vet - Shannon Vet Services Dr. Martha Shannon 1125 Storey Lane, Jefferson GA 30549 706-367-1198

Camping: KOA - 5473 Mt. Olive Rd. Commerce GA 30529 706-335-5535

Hotels Commerce Ga – several motels, please check pet policies before booking your rooms. Pick up after your dog at the motel and trial grounds.

HRD Course



HRD A. M. Sheep

Time: 15 minutes, warnings at 10 and 3 minutes Tie Breaker: #1 GATHER, #2 SORT, #3 DRIVE, #4 TIME

Tasks must be attempted in order. Handler is responsible for resetting all gates including chute gates. Time will start when Handler sends their dog.

Task	Possible Score
<p>GATHER in Pen #1 – Handler and dog enter Pen 1, places feed in feeder and moves to the Handlers Post. Sheep are brought into the pen by stock handler. HRD III handler stands at post to send their dog, HRD II handler sets dog at post and can walk half way to stock before sending their dog HRD I handler sets dog half way to stock and can walk 15' from stock before sending their dog. <i>Starts when handler sends their dog, ends with stock goes counter clockwise around Handlers Post</i></p>	15
<p>OBSTACLE #1 Y Chute – stock move counter clockwise around Handler's post. Handlers may accompany stock/dog to Y Chute #1, stock exits towards the freestanding obstacle. <i>Starts when stock goes around Handler's post, ends with stock exits Y Chute Obstacle</i></p>	15
<p>OBSTACLE #2 FREESTANDING OBSTACLE/DRIVE – stock exits Y Chute #1 and are driven to Freestanding Obstacle #2 HRD III handler must stay at the Y Chute #1 if they accompanied dog or if not at Handlers Post HRD II may walk half way to the Freestanding Obstacle #2 but not in front of dog HRD I handler may move anywhere <i>Starts when stock exits Y Chute, ends when stock exit Freestanding Obstacle #2</i></p>	15
<p>OBSTACLE #3 FREESTANDING PEN - fetch or drive stock to the Freestanding Pen. Pen stock and and return stock to Gate 1 where dog holds stock while handler opens Gate 1. <i>Starts when stock exits Freestanding Obstacle #2, ends when stock returns to Gate 1</i></p>	15
<p>SORT, HRDIII – stock is sorted at Gate 1, sort 3 head into Alleyway from Pen 1, then reunites all in Alleyway. Sort is at handler's discretion. <i>Starts when stock exit reaches Gate 1, sorted in Alleyway, into Pen 2, and exits at Gate 3</i></p>	10
<p>OBSTACLE # 4 Footbath, Pen 3 – fetch or drive stock to the Footbath and and return stock to Gate 3 where dog holds stock while Handler opens Gate 3 <i>Starts when stock enters Pen 3 through Gate 3 and returns stock to Gate 3 into Pen 2</i></p>	10
<p>Pen # 2, All Levels - stock enters Pen 2 from Gate 3 and is moved into the tub. <i>Starts when stock enter Pen #2 and ends when stock exit into Tub</i></p>	10
<p>OBSTACLE #4 CHUTE – Handler starts with stock in Tub. Dog can remain outside of Tub or come in at handlers' discretion. Handler enters chute area through mangate to open chute guillotine gates to drive stock down chute. Stock exit chute and is exhausted by Handler/dog in Exhaust Pen <i>Starts when Dog /Handler move stock from Tub into chute, ends when stock is exhausted.</i></p>	10

HRD P. M. Sheep

Time: 15 minutes, warnings at 10- and 3-minutes Tie Breaker: #1 GATHER, #2 SORT, #3 DRIVE, #4 TIME

Tasks must be attempted in order. Handler is responsible for resetting all gates including chute gates. Time will start when Handler sends their dog.

Task	Possible Score
<p>GATHER in Pen #1 – Handler and dog enter Pen 1, places feed in feeder and moves to the Handlers Post. Sheep are brought into the pen by stock handler. HRD III handler stands at post to send their dog, HRD II handler sets dog at post and can walk half way to stock before sending their dog HRD I handler sets dog half way to stock and can walk 15' from stock before sending their dog. <i>Starts when handler sends their dog, ends with stock goes clockwise around Handlers Post</i></p>	15
<p>OBSTACLE #1 FREESTANDING PEN – stock moves clockwise around Handlers post and are fetched or driven to Freestanding Pen Obstacle #1 <i>Starts when stock clears handlers post exits Freestanding Pen</i></p>	15
<p>OBSTACLE #2 FREESTANDING OBSTACLE/DRIVE – stock is driven from Freestanding Pen #1 to Freestanding Obstacle #2 HRD III handler must stay at the Pen to drive stock to the Freestanding Obstacle #2 HRD II may walk half way to the Freestanding Obstacle #2 but not in front of dog HRD I handler may move anywhere <i>Starts when stock exits Freestanding Pen, ends when stock exit Freestanding Obstacle #2.</i></p>	15
<p>OBSTACLE #3 Y Chute – stock move counter clockwise around Handler's post. Handlers may accompany stock/dog to Y Chute, stock exits towards the freestanding obstacle. <i>Starts when stock goes around Handler's post, ends with stock exits Y Chute Obstacle</i></p>	15
<p>SORT, HRDIII – stock is sorted at Gate 1, sort 3 head into Alleyway from Pen 1, then reunites all in Alleyway. Sort is at handler's discretion. <i>Starts when stock exit reaches Gate 1, sorted in Alleyway, into Pen 2, and exits at Gate 3</i></p>	10
<p>PEN #2 – stock exit Gate 1 into Alley, to Gate 2 into Pen # 2 and exits at Gate 3 <i>Starts when stock exit Gate 1 into Alley, into Pen 2, and exits at Gate 3</i></p>	10
<p>OBSTACLE # 4 Footbath, Pen 3 – fetch or drive stock to the Footbath and and return stock to Gate 3 where dog holds stock while Handler opens Gate 3 <i>Starts when stock enters Pen 3 through Gate 3 and returns stock to Gate 3 into Pen 2</i></p>	10
<p>Pen # 2, All Levels - stock enters Pen 2 from Gate 3 and is moved into the tub. <i>Starts when stock enter Pen #2 and ends when stock exit into Tub</i></p>	10
<p>OBSTACLE #4 CHUTE – Handler starts with stock in Tub. Dog can remain outside of Tub or come in at handlers' discretion. Handler enters chute area through mangate to open chute guillotine gates to drive stock down chute. Stock exit chute and is exhausted by Handler/dog in Exhaust Pen <i>Starts when Dog /Handler move stock from Tub into chute, ends when stock is exhausted.</i></p>	10

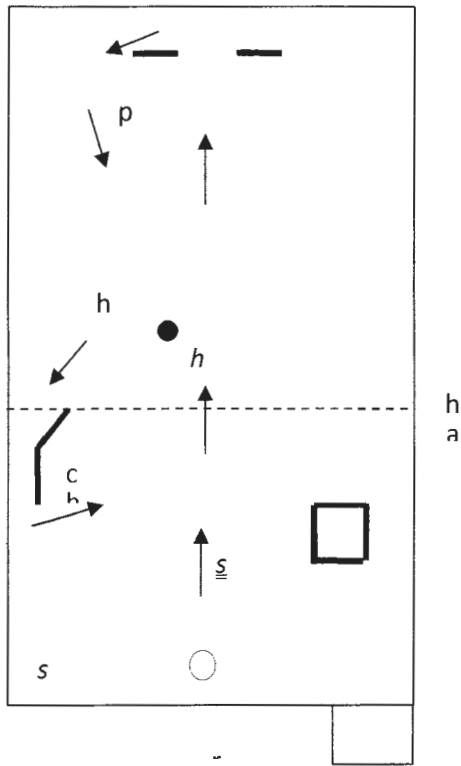
Sunday Trial – HTAD Course 3 Sheep

Time: 10 minutes, warning at 3 minutes

Stock will be set out for all levels

GATHER –	15
<i>HRD III handler stands at post to send their dog,</i>	
<i>HRD II handler sets dog at post and can walk half way to stock before sending their dog</i>	
<i>HRD I handler sets dog half way to stock and can walk 15' from stock before sending their dog.</i>	
OBSTACLE #1 – all levels put the stock thru the obstacle, then continue to Obstacle #2	15
Handlers are to remain at their designated locations while the stock are moved through the panels	
Level I handlers may go up to the panels, but should not precede the stock through the panels.	
FETCH/DRIVE – all levels will take the stock towards Obstacle #1. Drive ends 10' in front of Obstacle 1	15
<i>Level I may accompany stock</i>	
<i>Level II may accompany stock half the distance, then must remain for the remainder of the drive</i>	
<i>Level III must stay at Obstacle #1 and drive stock.</i>	
OBSTACLE #2 – all levels put the stock thru the obstacle, then continue to Obstacle #3	10
OBSTACLE #3 – all levels put the stock thru the obstacle, then continue to Hold	15
HOLD – all levels will hold stock in designated area, then continue to Sort/Repen	10
GATE SORT/RIBBON PULL	10
<i>Level III ONLY.</i>	
REPEN – all levels will repen stock into Exhaust Pen from Arena	10

HTAD COURSE #3



N
W + E
S

The designations North, East, etc. are for purposes of description only.

The course may be mirrored.

The stock set-out indicated on the diagram relates to courses that begin with a gather. The location of the take pen and/or repen may vary from the location for the repen shown on the diagram, so long as it is at the same end of the arena as shown. The handler's post is located a minimum of 100 ft. from the set-out and 6 ft. to the West of the North/South centerline of the arena. The chute is located on the West fence, with the entrance approximately 20 ft. South of the mid-point between the North and South ends of the arena, the entrance on the North and the exit on the South end. The chute should be no less than 12 feet long and no more than 4 feet wide with an opening of 8 ft. (A bridge may be substituted for the chute.) A handler's line extends across the arena from West to East even with the North end of the chute. The panel obstacle has a 12 ft. opening and is located 20 ft. off of the North fence, parallel to the North fence and an equal distance from the East and West fences. The freestanding pen is located 30 ft. from the

East fence and 30 ft. from the South fence, and should be 8-10 ft. on each side for sheep, 10-16 ft. on each side for cattle. (A trailer or a free-standing chute may be substituted for the pen.) The hold area is located approximately in the center of the arena. The area for sorts other than a gate sort is located approximately halfway between the hold area and the reopen gate. For poultry, all dimensions are ½ that for hooved stock.

1. Gather or Take pen

Gather: The stock are let out into the arena and allowed to settle, or may be set out in a specific location; the method used is to be consistent for all runs. In HTAD II, the handler may leave the dog at the handler's post and move to a point approximately halfway between the post and the stock, then send the dog to gather the stock. In HTAD I, the handler may leave the dog at a point approximately halfway between the post and the stock and move to approximately 15 ft. from the stock, then send the dog to gather the stock. At all three levels the stock are brought to and around the handler's post, passing just to the East of the handler's post and then turning toward Obstacle 1. The gather ends when the stock have gone just past the handler's post.

Take pen: HTAD III handlers must remain outside the pen while the dog brings out the stock. HTAD II handlers may enter the pen with the dog but should not move the stock themselves. HTAD I handlers may enter the pen and assist the dog in moving the stock. An exception is made for cattle, where the handler may go in and assist if necessary at any level. If the stock come out on their own volition without the handler or dog entering, there is no penalty. Once the gate to the take pen is opened, it may not be closed until the stock have exited. The stock are then taken to the handler's post, passing just to the East of the handler's post and then turning toward Obstacle 1. Scoring for the take pen ends when the stock have gone just past the handler's post.

2. Obstacle 1

The stock should enter at the North opening of the obstacle and exit to the South. HTAD III handlers must remain at the opening of the obstacle until the stock have exited. HTAD II handlers may move along the wing of the obstacle but may not move past the wing until the stock have exited. HTAD I handlers may move anywhere relative to the obstacle but may not enter it. Scoring for Obstacle 1 ends when the animals have exited.

3. Drive

After the stock exit the chute, they are turned back toward the North along the approximate North/South centerline of the arena. Going toward Obstacle 2, they should pass just to the East of the handler's post. HTAD III handlers must remain behind the handler's line. HTAD II handlers may accompany the stock to a point halfway to Obstacle 2, then must remain there for the rest of the drive. HTAD I handlers may accompany the stock up to Obstacle 2. The drive ends when the stock reach a point 10 ft. in front of Obstacle 2.

4. Obstacle 2

The handlers remain at the designated locations while the stock are taken through the freestanding panels. While HTAD I handlers may go up to the panels, they should not precede the stock through the panels. Once the stock have gone through the panels, handlers are free to move. The stock are turned to the West and then to the South past the West end of the obstacle and onto a line that will take them fairly directly to the area in front of the pen. Scoring for Obstacle 2 ends when the stock have passed to the South of the West end of the obstacle.

5. Obstacle 3

The stock are penned in the freestanding pen. Scoring for the pen ends when the pen gate is closed.

6. Hold

The animals are taken to the hold area. The stock is settled and briefly held in place. There is no required position for handler or dog. The judge signals the end of the hold/settle. HTAD I and II handlers then take the stock to the repen. HTAD III handlers proceed with the sort.

7. Sort

The sort is done by HTAD III handlers only. The stock is moved to the designated area, which depends on the type of sort being done. The sort may be one of the following: (a) Gate sort. (b) Ribbon-removal/shed. The sort ends when the gate is closed on the sorted animals, or when the ribbon has been removed/ animals have been shed.

8. Repen

The stock are taken to the repen and held a short distance off the gate while it is opened, and then are repenned. When a gate sort has been used, the animals that had been left out in the arena are repenned. The run ends when the repen gate is closed after the last animal has exited the arena.

OFFICIAL AHBA ENTRY FORM AND TRIAL/TEST RECORDING FORM FOR AHBA SANCTIONED HERDING TEST AND TRIAL

NAME OF CLUB or PERSON(S) Sponsoring this Event: Rachel Vest at Ramsgate Farm		
Date of Event: May 17 & 18, 2025	Entries Close On: Trial day	At: ½ hour before start of class
Make checks payable in US funds to: Rachel Vest		
Send to the Trial Secretary: Rachel Vest 1494 Hog Mountain Rd. Jefferson, GA 30549		

ELIGIBILITY: All dogs nine months of age or older are eligible to participate in Herding Trials and JHD. Dogs classified as Herding Dogs in AHBA are eligible for HERDING TEST (HCT) and may participate at six months of age or older. No dog may be entered in two classes on the same course with the same kind of stock under the same judge at any Test/Trial. Bitches in season shall run in drawn running order without adjustment.

IMPORTANT. READ THIS BEFORE SIGNING.

In consideration for participation in an event sanctioned by the American Herding Breed Association (AHBA), I agree to assume all responsibility for any claim, loss or damage, of whatever kind or nature, whether to person or property, which may be caused at or near this event, either directly or indirectly, by me or the dog or dogs I have entered in or brought to this event. I further agree that I will hold the AHBA, its officers, directors, agents and members harmless and defend them from any and all liability for any injury, claim, damage or loss, of whatever kind or nature, whether to person or property, caused at or near this event, whether directly or indirectly, by me or any dog I have entered in or brought to this event. I agree to indemnify the AHBA, its officers, directors, agents and members for any loss, cost or expense including attorneys fees and costs, to which the AHBA, its officers, directors, agents or members might be subject as a result of any claim, suit, loss or damage caused in any way by any act or negligence on my part or on the part of any dog or dogs I have entered in or brought to this event. I acknowledge that while the AHBA may provide sanctioning for this event with regard to the issuing of titles, it does not have and does not exercise control over the conduct of the event or those present.

I CERTIFY and represent that the dog or dogs I have entered in or brought to this event is/are not a hazard to other dogs, other animals, or to people.

I CERTIFY that I am the actual owner of the dog or that I am the duly authorized agent of the actual owners whose name I have entered. In consideration of the acceptance of this entry, I (we) agree to abide by the Rules and Regulations of the AHBA in effect at the time of this Herding Test or Trial or both, and further agree to be bound by the agreement printed above. The entry is submitted on the foregoing representation and agreement.

Signature of Owner &/or Agent: _____

Please enter one dog per Entry Form. **NOTE:** A dog must be entered in the name of the person(s) who actually owns it at the time entries are made for the Herding Test or Trial. **A Registration or Tracking Number must be included.**

Actual Owner(s):			
Address:			
City:	State:	Zip:	Country:
Telephone:	Email:		
Agent's Name (if applicable):			
Telephone (Agent only):		Email (Agent only):	
Full Name of Dog:			
Registration OR Tracking Number:		Registry:	Date of Birth:
Place of Birth	{ } USA	{ } CANADA	{ } Other
Breed:		Variety:	Sex:
Breeder:			
Sire:		Dam:	

Date/Trial:	Course/Test:	Level/Leg:	Stock:	Fee:	Judge:	Score:	Q
Total Fees Enclosed: .					Trial Secretary USE ONLY		